



National
Child
Exploitation
Awareness Day
18th March



Lin Sands - Police & Justice Lead

lin@nwgnetwork.org

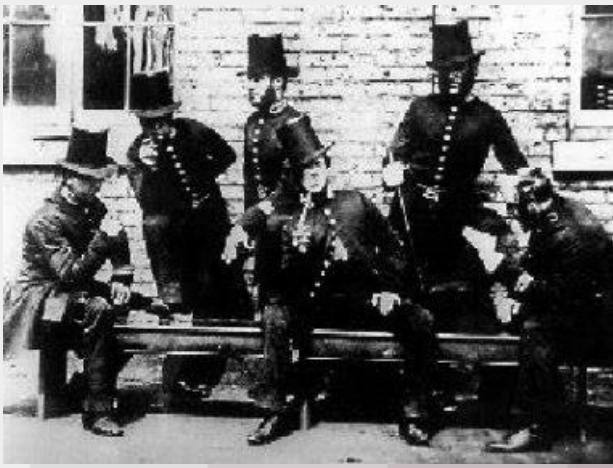
Lin's Role & Responsibility

- Increase an understanding of the variety of partners who support/safeguard children & young adults, at risk of/experiencing exploitation
- Development of key tools/templates/frameworks used to tackle exploitation & to share them across the network
- Provide Network members/others with a platform to share developing practice
- Offer advice & outline opportunities for specific cases, acting as a critical friend

What is Exploitation?

- Modern Slavery
- Human Trafficking
- Slavery, servitude or forced or compulsory labour
 - Sexual Exploitation
 - Criminal Exploitation
 - Labour Exploitation
 - Removal of organs
 - Domestic Servitude
- Securing services etc. by force, threats or deception/ coercion
- Involvement in Gangs e.g. County Lines
- Radicalisation
- Financial exploitation
- Home Invasion (cuckooing)





A brief introduction to the role of British Policing

About British Policing

- British policing is based on consent, meaning the ability of the police to carry out their functions rests on 'public approval of their existence, actions and behaviour'.
- Accountability is therefore essential to ensure the police's responsiveness to the public.
- Several recent high-profile scandals have strained this relationship & brought into focus the need for strengthened accountability.
- 43 territorial forces covering England & Wales, some of which hold national responsibilities. E.G the Metropolitan Police are also responsible for counter-terrorism.
- In addition, there are 10 regional organised crime units that perform specialist functions.
- Other forces perform national functions, such as the British Transport Police, which serves the railway network.

What is the role of the Police?

- Principally law enforcement professionals
- Expected to investigate crimes & prepare those cases for prosecution by the Crown Prosecution Service
- Frequently the first port of call when help is required
- Duty to protect life & property
- To work in partnership with other statutory services (Health/Social Care/Education) to safeguard vulnerable members of society by disrupting criminal activities

What is 'Disruption'?

A break or interruption in the normal course or continuation of an activity or process.





CRIMINAL, CIVIL AND PARTNERSHIP DISRUPTION OPTIONS FOR PERPETRATORS OF CHILD AND ADULT VICTIMS OF EXPLOITATION

**KAY WALLACE NWG EXPLOITATION RESPONSE UNIT AND
RACHEL HOPPER BARNARDO'S NATIONAL COUNTER TRAFFICKING SERVICE.**



National Referral Mechanism (NRM)

- Framework to identify potential victims of Modern Slavery & Human Trafficking (MSHT) in the UK
- A process to ensure that children/adults receive appropriate support & protection
- Enables us to monitor & record the scale of MSHT (that we know about!) as well as to map themes & trends
- Informs the national response to MSHT

Thank you for your time. Do you have
any
Comments? Queries? Questions?
Feedback?

?

?

?



Thank you for your time today. If you would like to book or discuss further training, membership of NWG or book a surgery please contact us via the following;

Website - <https://nwgnetwork.org/>

Phone – 01332 585371

Email – network@nwgnetwork.org

Facebook - <https://www.facebook.com/TheNWGNetwork/>

Twitter - <https://twitter.com/NatWorGroup>

Instagram - <https://www.instagram.com/nwgnetwork>

LinkedIn - <https://www.linkedin.com/in/sheila-taylor-mbe-0a5b6711>



“Preventing and Disrupting the Exploitation of Children and Young People” by NWG Network is licensed under [Creative Commons Attribution-NonCommercial-NoDerivatives 4.0 International License](https://creativecommons.org/licenses/by-nc-nd/4.0/)