



updates

Chris Freestone September 2023

updates

- Covid 19.
- General rise in numbers , led by variants of Omicron. New variant, Pirola now appearing across communities. Appears to be more transmissible.
- Impact re. low number related to vaccine uptake in the spring and waning of community immunity.
- Flu/C19 vaccination / booster started 11th September- brought forward.
- Taking a living with Covid approach? Have you got this in place ?



Covid 19

- Interactive map (post codes) back in place
- NHS/ONS surveillance data tracking back in place for C19 and 'flu



updates

- Updated Ofsted guidance re. LA inspections

<https://www.gov.uk/government/publications/inspecting-local-authority-childrens-services-from-2018/inspecting-local-authority-childrens-services>

- Minor updates re. Sarah's Law applications

<https://www.gov.uk/guidance/find-out-if-a-person-has-a-record-for-child-sexual-offences>

- Updates to use of unregulated placements /Dols

<https://www.gov.uk/government/news/ofsted-warns-against-use-of-unregistered-childrens-homes>

-



updates

- <https://www.gov.uk/government/publications/placing-children-deprivation-of-liberty-orders>
 - Guidance for commissioners and to be read with Family Court guidance

Children's Commissioner – announcement of the “Big Ambition” survey for young people- open until December 15th 2023.

-



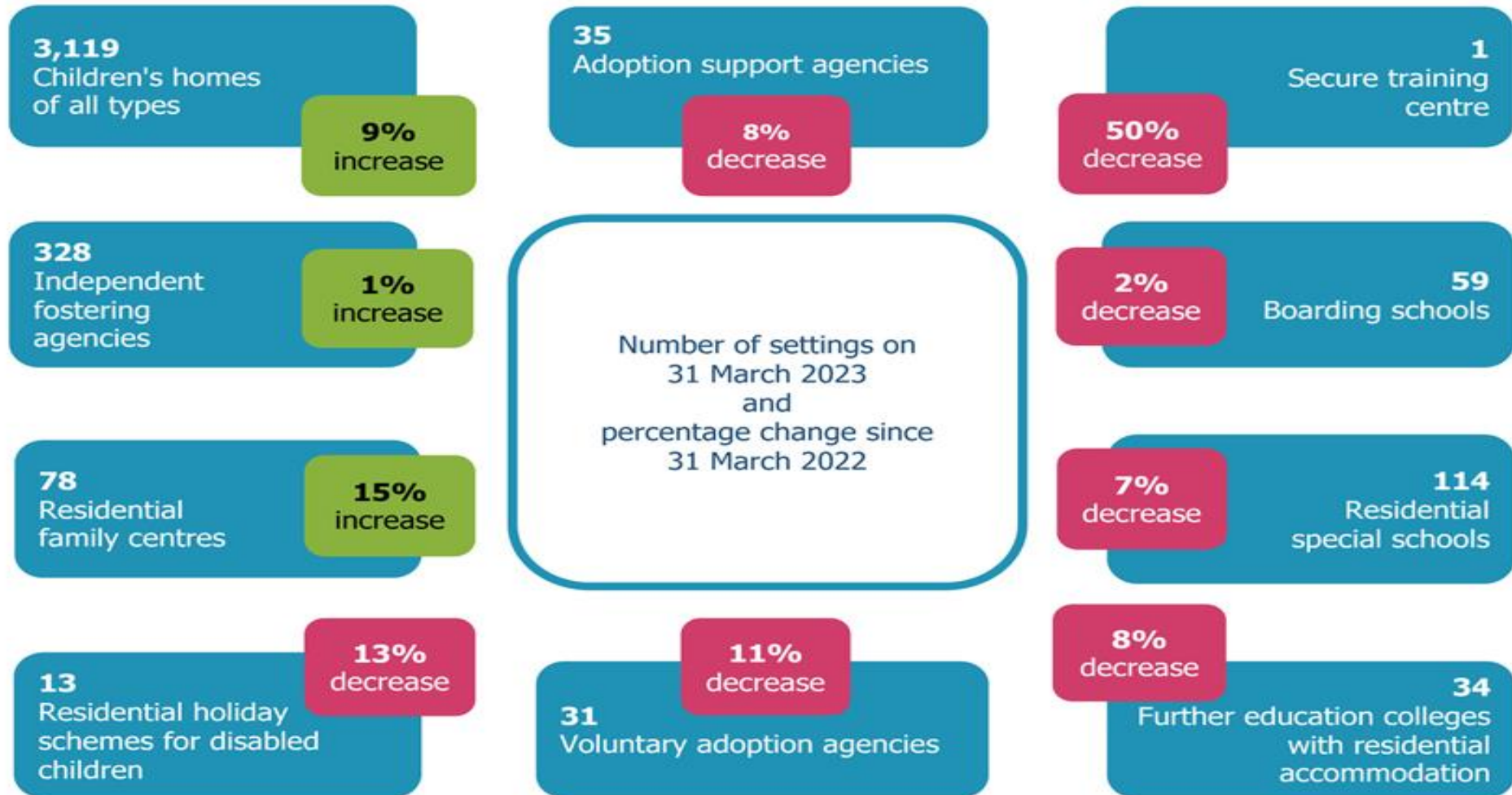
Updates RAAC

- Important to note potential impact for young people. This will be an ongoing issue – no immediate solution.
- Education staff in effected schools being as creative as possible and seeking solutions in order to maintain education .
- As you can see from the spreadsheet this includes :
- Online learning
- On site
- Move to another non – affected school
- Temporary classrooms
- Blended offer
- https://assets.publishing.service.gov.uk/government/uploads/system/uploads/attachment_data/file/1181798/Number_of_education_settings_with_confirmed_RAAC_and_mitigations_in_place_as_of_30_August_2023_1.csv/preview

Ofsted- social care report(including ILACs)

- Out of the nearly 12 million children living in England, just over 400,000 (3%) are in the social care system at any one time. Just over 82,000 of these children are children in care.
- As at 31 March 2023, there were 3,812 children's social care providers. This is a 7% increase compared with 31 March 2022, when there were 3,576 providers. This is a similar increase to previous years.
- As in previous years, the reason for this increase can be attributed largely to the increase in children's homes: a 9% increase in settings (246) and a 5% increase in places (630). Residential family centres represent a much smaller proportion of social care providers and places overall but saw a large proportional increase compared with last year, with a 15% increase in settings (10) and a 20% increase in potential capacity (73).

31.3.23- settings by provider type



Ofsted social care report

- **Children's home providers and places as at 31 March 2023**
- There were 2,880 children's homes as at 31 March 2023, a 9% increase (238 homes) from the previous year (2,642). These 2,880 homes were registered for 10,818 places, a 7% increase from 10,113 at 31 March 2022.
- Both the number of homes and places had a faster rate of growth this year than the rate in 2022, when the number of homes grew by 7% and places by 4%. This was accounted for by 365 homes opening and 116 homes closing

Table 3: The number of children's homes and the number of places as at 31 March 2023, by region

Region	Number of children's homes	Percentage of children's homes	Number of children's home places	Percentage of children's home places
North West	746	26%	2,458	23%
West Midlands	475	16%	1,672	15%
North East, Yorkshire and the Humber	430	15%	1,612	15%
East Midlands	331	11%	1,218	11%
South East	303	11%	1,461	13%
East of England	230	8%	1,010	9%
South West	201	7%	600	6%
London	164	6%	787	7%
England	2,880	100%	10,818	100%

Any inspection or other feedback ?

- Thoughts / reflections?

